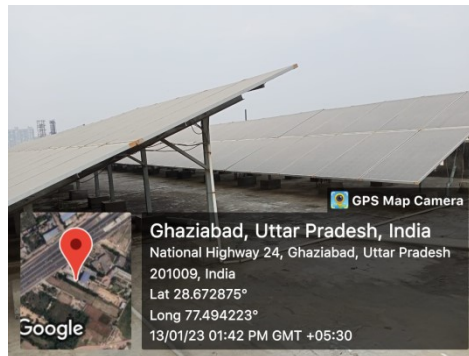
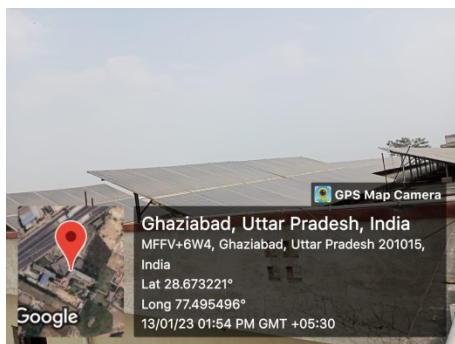


7.1.2 The Institution has facilities for alternate sources of energy and energy conservation measures

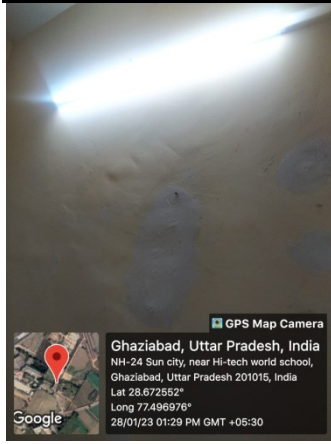


Power saving grid

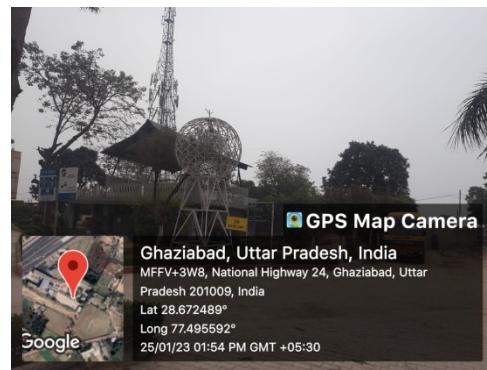
1.Solar energy



2. Use of LED bulbs/ power efficient equipment



7.1.2 Types of degradable and non-degradable waste Solid Waste Management



Vermicompost

use of waste iron rods

Proper Drainage System



Liquid waste management

